

SELECT TIDELINE™ LAY-FLAT TRANSFER HOSE



PRODUCED TOUGH™

PROPRIETARY DESIGN BY SELECT'S WATER & CHEMISTRY EXPERTS
TO PERFORM IN PRODUCED WATER-CENTRIC OPERATIONS

Introducing TideLine™ Lay-Flat Transfer Hose. At Select Water Solutions we believe innovation starts from the ground up. We've deployed thousands of miles of lay-flat hose over the last decade and drew upon this expertise in the development of a new standard in lay-flat hose technology.

- High tensile strength reinforced core
- Chemical and hydrolysis resistant inner layer
- Abrasion and UV resistant outer layer
- QR code serial tracking
- High-visibility reflective striping
- Certified manufacturing partners with strict quality control plan



Tracked

Select systematically collects tracking data via serialized code to verify the use and service life of deployed hose. This allows us to connect performance data at the asset level and reduce the risk of spills and line ruptures.

Tested

TideLine hose underwent vigorous testing to verify field performance. Select in-house labs and chemistry teams conducted a battery of test to confirm TideLine exceeded thresholds for critical performance metrics.

Tough

Each layer of TideLine hose was meticulously designed to be tough by testing for material compatibility in waters with high TDS, oxidants, acids, H₂S, and temperature fluctuations.

Deployed Today. A New Standard for Tomorrow.

TideLine Lay-Flat has been deployed today in the Permian Basin where it is in demand most for produced water transfer operations. Select estimates the current standard working pressures may be reevaluated in light of TideLine's performance testing. This provides a measurable improvement in the efficiency in transfer operations compared to standard hose options.

REGULAR HOSE. REGULAR ISSUES.

Most lay-flat hose on the market today was designed when freshwater was the primary base fluid used in fracturing and often has regular performance issues when exposed to produced water. Some have the potential to be catastrophic.

Produced water creates unique challenges requiring modern hose to be more resistant to chemistry, corrosion, abrasion and field conditions to maintain reliability during its lifespan.

TideLine was developed to be more than standard hose, instead becoming the new standard in hose technology used in the industry.

TESTING **TIDELINE**[™]

Verification of new-hose technology requires vigorous quality control and performance testing. With a specialized lab in Houston, Texas, Select has performance testing down to a science.

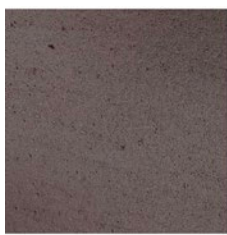
SPECIFICATION AND SUPPLIER QA/QC

Select has an exclusive agreement with our suppliers based on a specification outlined to address 6 key quality and performance related metrics:

Chemical compatibility	Wear resistance	Product consistency
UV resistance	Working pressure	Track-ability of the asset

WATER SAMPLING & MATERIAL SCIENCE TESTING

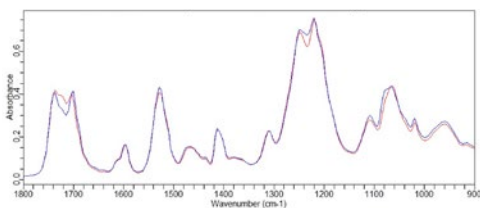
Multiple produced water tests were conducted across the Permian in regular intervals to compare against microscopic inclusion and material fatigue testing.



TideLine Hose Unused



TideLine Hose Used



Hose samples were collected for microscopic analysis pre and post produced water exposure.

Results from both microscopic analysis and FT-IR scan indicated that the inner surfaces of TideLine hoses remain intact without noticeable chemical or physical changes after produced water exposure.

PRESSURE & LIFESPAN TESTING

Tideline hose sustained 5000 pressure cycles of a controlled cyclic test at a 0 - maximum working pressure (MOP). Burst pressure testing was rated at 3x maximum working pressure (MOP) following the cycle test.

Hose coupon exposure test confirmed field findings of chemical compatibility and is Select's established regular testing method for quality benchmarking of tracked hose assets.



IDEAL FOR AUTOMATION

Select provides state-of-the-art automation technology that improves water management efficiency across complex water networks.

As a trackable asset, Select can pinpoint hose data in the context of our automated networks and provide customers insight to asset history.



RELATED FEATURES

- HISTORICAL DATA & ASSET TRACKING
- AUTOMATED PUMPS
- AUTOMATED MANIFOLDS
- LEAK DETECTION TECHNOLOGIES
- TREATMENT & CHEMISTRY DOSING
- WATER BALANCING FOR LARGE FACILITIES

READY TO SEE WHAT WE CAN DO FOR YOU?

To learn more about our water transfer services or request a quote, contact your Select Account Representative or visit selectwater.com/contact