

ON-THE-FLY CHEMICAL INJECTION

Precision Controlled In-line Frac Chemical Blending

Take control of your well chemistry with Select Chemistry's on-the-fly Chemical Injection system. Automated dosing and monitoring can provide visibility and precision to optimize fluid blends while potentially eliminating third-party pumping charges.

Solutions to an optimized chemical blend and spend are critical to operators seeking to minimize well costs. Injecting chemistry before reaching the blender allows operators to verify fluid compatibility in a. Rockwater's system includes the following advanced features:

- UP TO 6 CHEMICAL PUMPS & 2 TRANSFER PUMPS.
- VARIABLE RATE CONTROL FOR PRECISE BLEND RATIOS BASED ON REQUIREMENTS
- 100% REDUNDANCY OF POWER UNITS (DECK MOTORS)

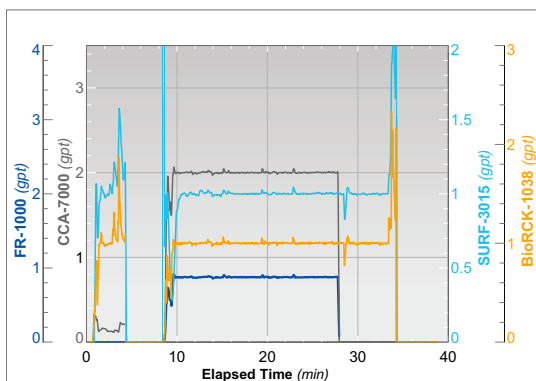
METERING

The rate meter and injection tool are placed between the working tanks and blender suction manifold. This provides a fully treated fluid to the pressure pumping equipment and no required job parameters from the frac service provider.

- MASS FLOW METERS FOR HIGH PRECISION & VARIABLE DOSING
- FULLY AUTOMATED UNIT WITH LOAD RATIOS CALCULATED FROM MAGNETIC FLOW METERS PLACED UPSTREAM OF THE CHEMICAL INJECTION TOOL.

MONITORING

With Internet access, our real-time data acquisition can be monitored remotely by any computer or mobile device.



Streamline Reporting.

View up to the minute and historical data on each chemical to track dose rates and flow rates.

Dynamic Dosing. Multiple chemical inputs automatically adjust dosing through feed-line actuators based on flow rates through the system.



KEY BENEFITS

AUTOMATION TO OPTIMIZE

Real-time chemical blend optimization through automation is critical to maintaining a competitive edge in terms of completion costs and performance.

CRITICAL DATA VISIBILITY

Track and report on chemical usage to verify progress, performance, and billing for key stakeholders.

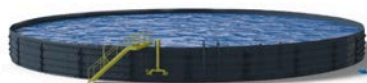
TECHNOLOGY AND LOGISTICS EXPERTISE

Select Chemistry is a unique provider of advanced chemistry developed and manufactured specifically for the oilfield. Combined with our direct to the field logistics and support on-location, Select Chemistry goes the last mile.

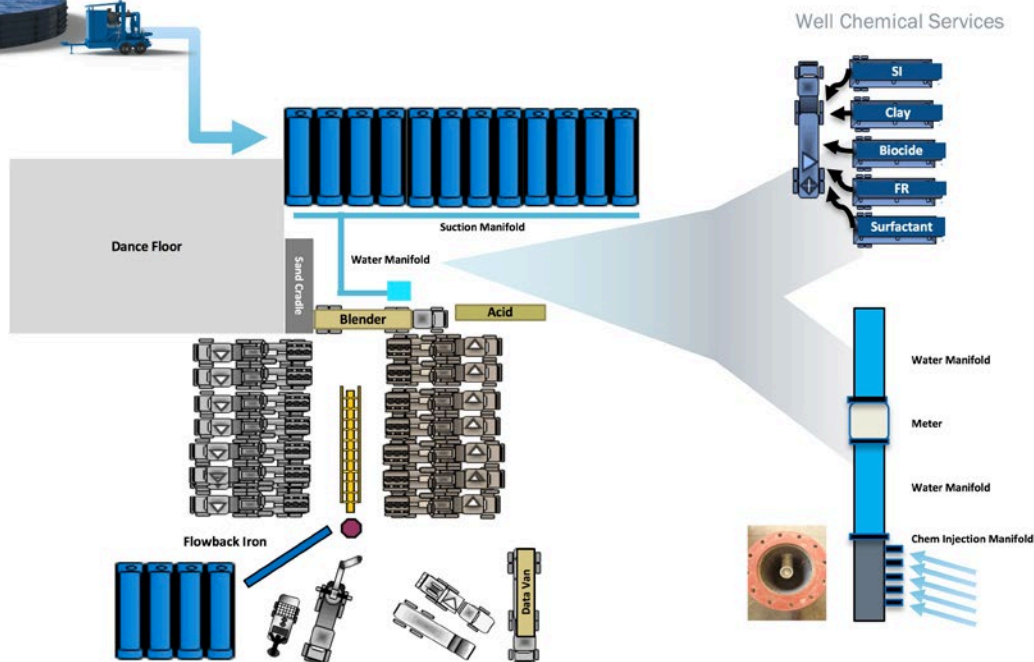
WE KNOW WATER

Select is one of the largest providers of comprehensive water management solutions including sourcing, treatment, infrastructure, transfer, and storage. Speak to a Select representative to learn more about our strategic capabilities.

HOW IT WORKS ON LOCATION



Effective Treatment, Minimal Footprint.
 The chemical injection manifold and meter is placed near the water manifold which allows dosing of multiple chemical constituents before reaching the frac blender.



FIELD PERSONNEL

Each deployment is staffed with a Select Chemistry Equipment Operator performing 12-hour shifts with the responsibilities listed below. A second operator available for dispatch as needed for transferring of products, spotting equipment, rig up/down, etc.

Equipment Operator Capabilities and Responsibilities

- Perform pre-job maintenance inspection of the unit
- Perform procedures to ready the unit for pumping procedures
- Perform on-site job duties for operating chemical injection equipment within the needs of the particular job
- Perform pre-job measurement testing to confirm and record accuracy of mass flowmeters
- Manage inventory of products on location and replenishment orders as required
- Provide per stage usage and reporting to Tap Rock Resources representative on location Responsibilities

Equipment Operator will be competent in the areas listed below:

- | | |
|--------------------------------|------------------------|
| • Health, Safety & Environment | • Pre-Job |
| • Emergency Response | • Job Execution |
| • Maintenance | • Post-Job |
| | • Interpersonal skills |



OILFIELD TECHNOLOGY LEADER

Our innovative technology team can help make critical recommendations when it counts. Select Chemistry's labs are staffed by experienced chemists and engineers who assess different aspects of your well and fluid systems to formulate solutions that boost productivity and prevent issues over the life of the well.

For more information on Chemical Injection Services contact us at 713-235-9500 or visit selectchemistry.com